

Devon & Cornwall Orienteering Clubs invite you to 3 ranking events, incorporating the 2012 South-West Sprint and Middle Distance Championships



TAMAR TRIPLE 2012

**BANK HOLIDAY WEEKEND
2nd – 4th June**



Sat 2nd June **SW Sprint Championship - Exeter University** - 2 Races Starts: 1200 - 1330 and 1500 - 1600. Ranking points will be awarded on cumulative time.
NB As this is a level B event, Race 1 will have timed starts.
Race 2 starts will be determined by Race 1 times - reverse order, 1 min intervals

Sun 3rd June **SW Middle Championship - Smallhanger/Wheel Florence** 1100 - 1330
The senior courses have an additional challenge. There will be a mixture of Smallhanger at 1:10000, and Wheel Florence at 1:2500.
Sadly, this is the **very last opportunity** to run on Wheel Florence.

Mon 4th June **Classic Regional Event - Cookworthy Forest** Starts 1100 - 1330

Courses **Sat & Sun** Entry by age class. courses according to BOF guidelines C and D
Mon Brown, blue, green, short green, light green, orange, yellow, white.
PTO for map fragments.

Event Levels Day 1 is Level B. Days 2 and 3 are Level C.

Punching All courses use SI. Hire charge £1 per day or £2 for 3 days
Punching starts will be in half hour blocks for Level C events

Dogs Strictly on leads in car parks

Travel PTO for overview map

Campsite TBA

Entry Fees Seniors £14 Juniors £3 per day

BOF Discount Senior National & SWOA Local BOF members £2 discount per day.
Enter all three days, discount £3 seniors, £1 juniors

String Course Free - subject to availability.

Entries On line preferred to: www.fabian4.co.uk Closing date Sunday 20th May 2012
Late entry/EOD £2 extra per day, subject to map availability.

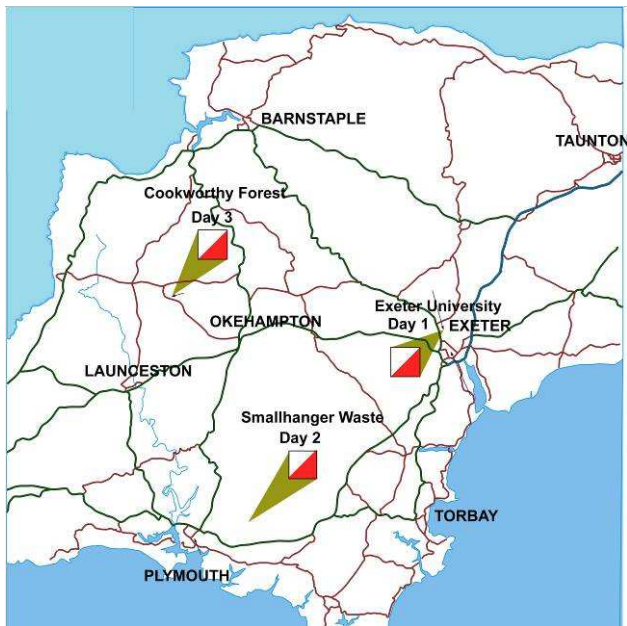
Postal Entries Standard entry form: TT 2012 Entries, 3 Back Lane, East Coker, Yeovil, BA22 9JN

Final Details Enclose 9in x 6in self-addressed envelope. Cheques payable to: TAMAR TRIPLE
Final details and results will be on the event website:-

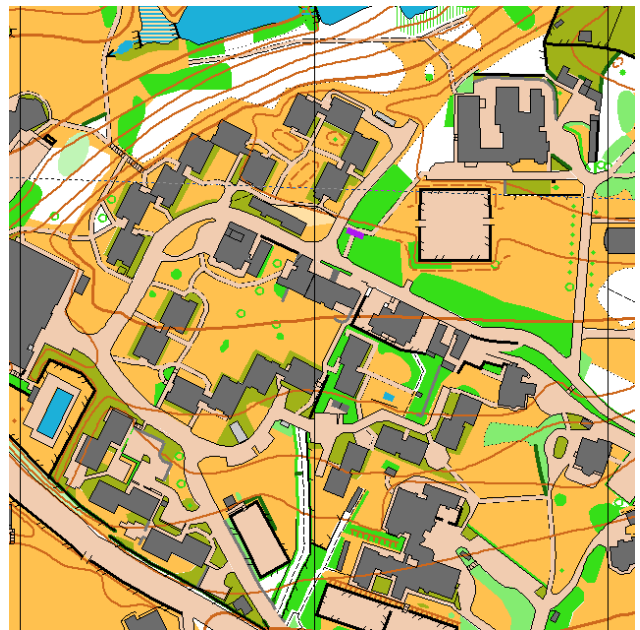
Website <http://www.tamartriple.org.uk>

Entry Enquiries: entries@tamartriple.org.uk or 01935 863429. No Calls after 9:00pm please
General Enquiries: info@tamartriple.org.uk or 01752 311367

Tamar Triple 2012 Venues



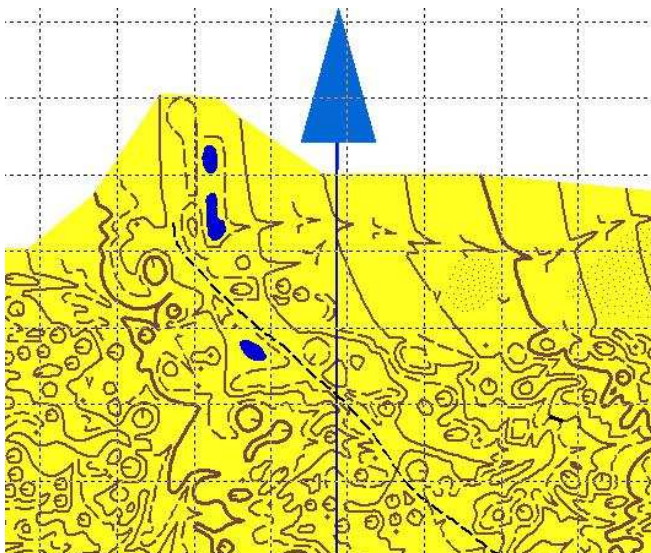
Day 1 Exeter University



Day 2 Smallhanger /Wheal Florence

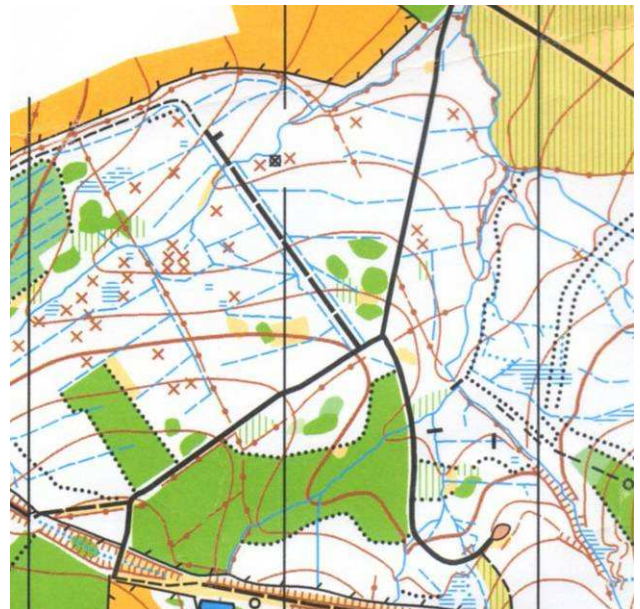
Wheal Florence is a maze of pits and some gullies, left by the industrious tin-miners, mapped equally industriously by Jim Prowting at 1:2500 and 1.25m contours.

All the gullies are represented by the contour lines. No gully symbol is used.



Day 3 Cookworthy Forest

Hopefully a little drier than JK 2010!



It will probably be possible to print the two maps on the same side of an A3 sheet.